



THE COLLEGE OF  
OPTOMETRISTS

# Stage Two

## Overarching case scenario 17

**AGE AND GENDER** Male aged 53 years

**ETHNIC BACKGROUND.** Caucasian

**OCCUPATION AND HOBBIES** Bathroom Fitter/Plumber: Drives Hobbies: DIY, bowling, watching films

**PRESENTING SYMPTOMS AND HISTORY** Vision getting worse for distance and near *over* past year; last check on vision and eyes by GP about 2 years ago. Never worn spectacles.

**GENERAL HEALTH AND MEDICATION** Diabetic since age 16; well-controlled by daily insulin injections

**PRESENT Rx, CENTRATION AND ACUITIES** none

**PD/NCD** 65 (R32.5/L32.5) / 61 at 30cm

**VISION**

Distance RE: 6/9-1 LE: 6/9-3 Binoc 6/9

Near RE: N6 LE: N6 at 40cm

**PINHOLE VISION** RE: 6/5 LE: 6/5

**REFRACTION**

RE: -0.50/-0.25 x 180 6/5+3 Near Add +1.75 N5

LE: -0.75/-0.25 x 175 6/5. Near Add +1.75 N5 at 30 cm

**ACCOMMODATION** RE: 2.0 LE: 2.0 Binoc 2.25

**BINOCULAR STATUS**

Distance with and without Rx Maddox Rod 2 prism R Hyper 2 prism sop

Near Maddox Wing 2 prism R Hyper 1 prism xop

Mallett Unit D & N No H slip: V 1prism base UP LE to align bars

**MOTILITY** full, no diplopia

**CONVERGENCE** NPC = 8cm

**PUPIL REACTIONS** direct, consensual and near reflexes present

**FUNDUS EXAMINATION** see attached

**FIELDS** see attached

**IOP** RE: 18mmHg LE: 18mmHg Goldmann 10.30am

**EXTERNAL EYE EXAMINATION** see attached

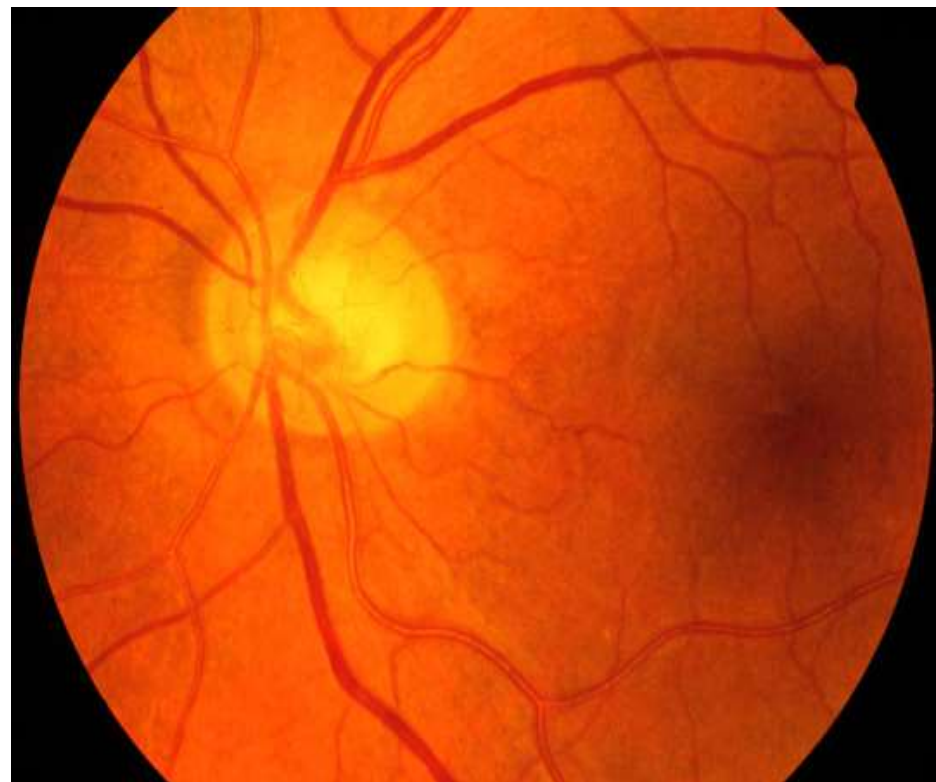
**KERATOMETRY**

RE: 7.90 @ 90 : 7.95 @ 180

LE: 7.85 @ 90 : 7.95 @ 180

**COLOUR VISION** see attached

# Fundus Image



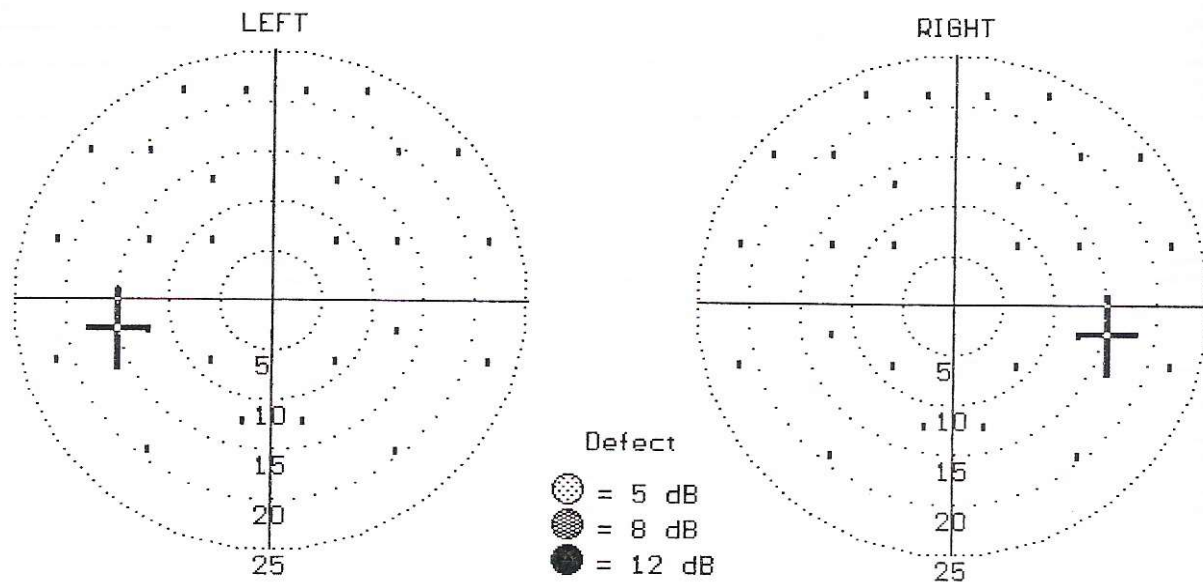
# External Eyes



# Field RE & LE

Multiple Stim Supra-thresh

Central Field Test



Missed/Presented = 0/26

Missed/Presented = 0/26

Threshold Sensitivity = 37 dB

Threshold Sensitivity = 36 dB

# Colour Vision (Binocular)

ISHIHARA TEST SCORE SHEET (38-PLATE EDITION, 1979)

NAME: \_\_\_\_\_ DATE: \_\_\_\_\_

PLATE	SCORE	NORMAL	DEFICIENT	TOTAL CH/ WEAK	ANOPIA	PROT ANOMALY	ANOPIA	DEUTER ANOMALY
1	12	12	12	12	12	12	12	12
2	3	8	3	-				
3	5	6	5	-				
4	70	29	70	-				
5	85	57	35	-				
6	2	5	2	-				
7	5	3	5	-				
8	17	15	17	-				
9	21	74	21	-				
10	-	2	-/X					
11	-	6	-/X					
12	-	97	-/X					
13	-	45	-/X					
14	-	5	-/X					
15	-	7	-/X					
16	-	16	-/X					
17	-	73	-/X					
18	-	-	5	-				
19	-	-	2	-				
20	-	-	45	-				
21	-	-	73	-				
22	2(6)	26			6	(2)6	2	2(6)
23	4(2)	42			2	(4)2	4	4(2)
24	3(5)	35			5	(3)5	3	3(5)
25	9(6)	96			6	(9)6	9	9(6)

NOTES: - no numeral read      X incorrectly read      A(B) A clearer than B